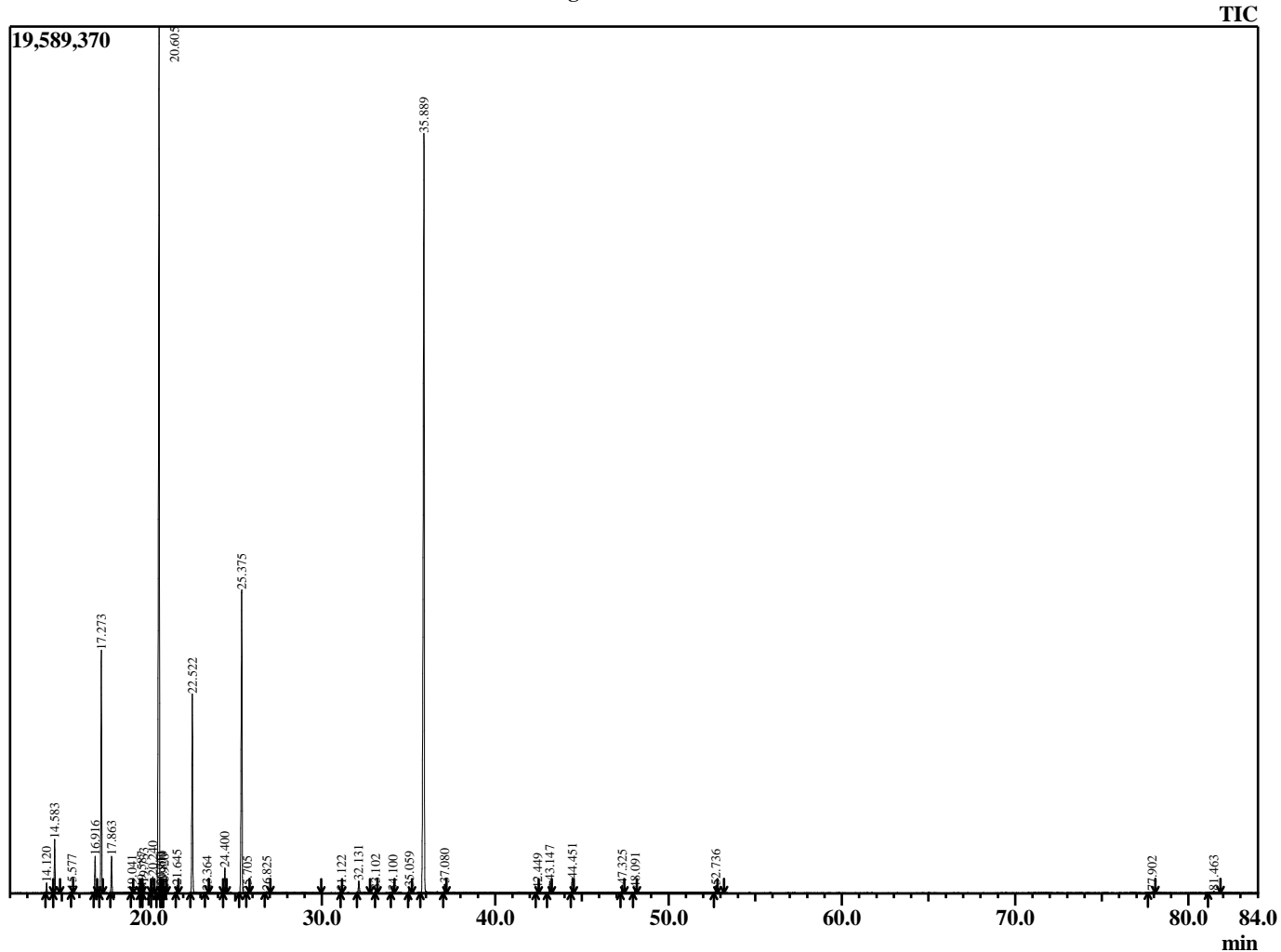


Sample Information

Analyzed by : B. Harris  
 Analyzed : 3/20/2015 3:57:56 PM  
 Sample Type : Essential Oil  
 Sample Name : CitBer2  
 Lot Number : 31629  
 Injection Volume : 0.10

Chromatogram CitBer2 Lot 31629



R.Time	Name	Area%
14.120	Thujene <alpha->	0.28
14.583	Pinene <alpha->	1.51
15.577	Camphene	0.07
16.916	Sabinene	1.07
17.273	Pinene <beta->	7.26
17.863	Myrcene	1.20
19.041	Phellandrene <alpha->	0.07
19.587	1,4-Cineole	0.20
19.733	Terpinene <alpha->	0.34
20.240	p-Cymene	0.55
20.605	Limonene	32.04
20.711	Phellandrene <beta->	0.20
20.800	1,8-Cineole	0.17
20.920	Ocimene <Z-beta>	0.11
21.645	Ocimene <E-beta>	0.25
22.522	Terpinene <gamma->	6.82
23.364	Linalool oxide <cis-(furanoid)>	0.04
24.400	Terpinolene	0.88
25.375	Linalool	11.30
25.705	Nonanal	0.04
26.825	Fenchol	0.05
31.122	Terpinen-4-ol	0.06
32.131	Terpineol <alpha->	0.50
33.102	Octyl acetate	0.10
34.100	Neryl	0.10
35.059	Neral	0.23
35.889	Linalyl acetate	31.98
37.080	Geranial	0.34
42.449	Terpineol <gamma->	0.18
43.147	Neryl acetate	0.47
44.451	Geranyl acetate	0.55
47.325	Caryophyllene <trans>	0.33
48.091	Bergamotene <cis-alpha->	0.21
52.736	Bisabolene <beta->	0.31
77.902	Citropten	0.07
81.463	Bergapten	0.11
		100.00