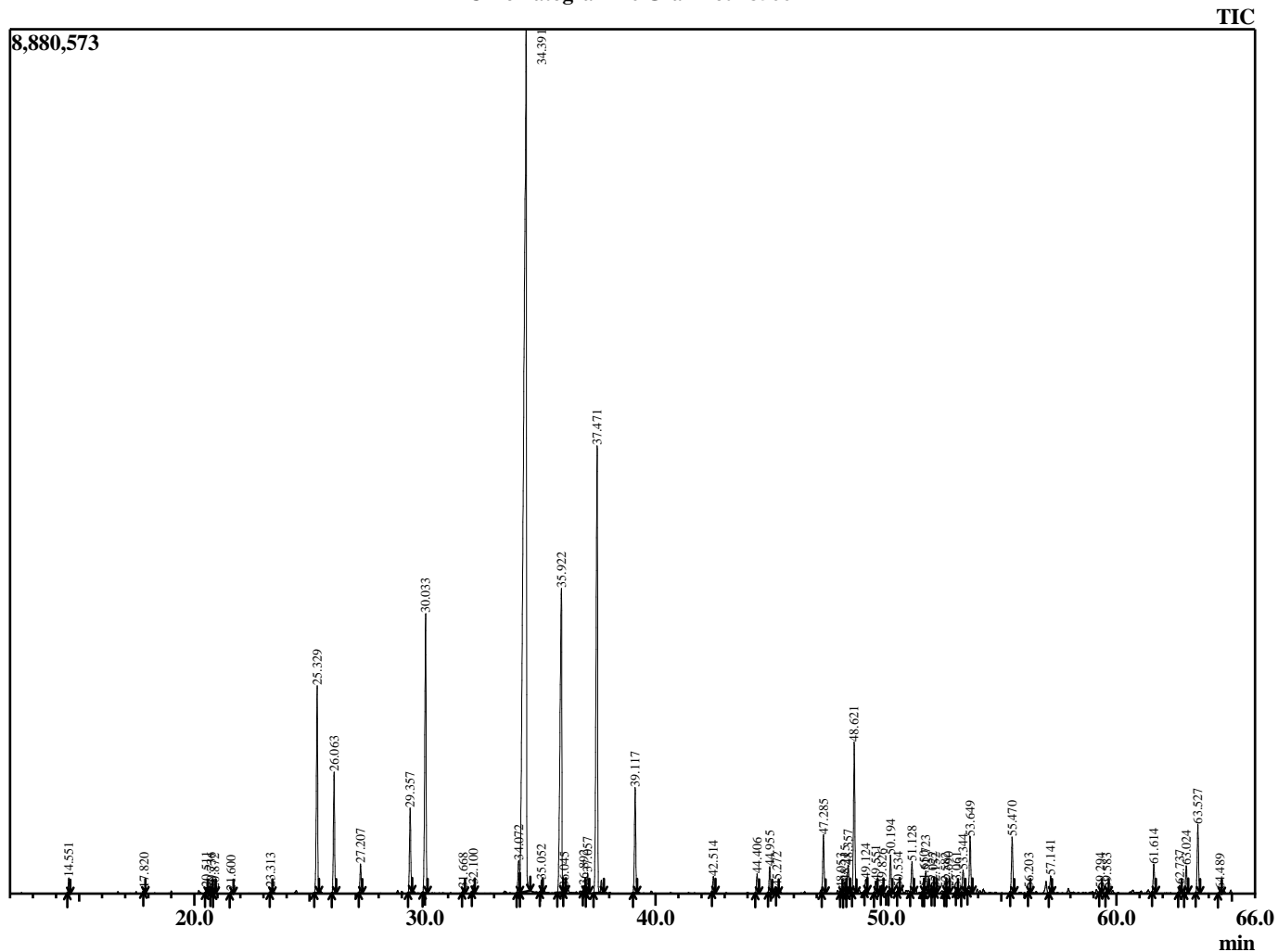


Sample Information

Analyzed by : B. Harris
 Analyzed : 8/21/2015 12:54:52 AM
 Sample Type : Essential Oil
 Sample Name : PelGra1
 Lot Number : 18566
 Injection Volume : 0.10

Chromatogram PelGra1 Lot 18566



R.Time	Name	Area%
14.551	Pinene <alpha>	0.24
17.820	Myrcene	0.04
20.511	Limonene	0.10
20.736	Eucalyptol	0.08
20.872	Ocimene <Z-beta>	0.07
21.600	Ocimene <E-beta>	0.06
23.313	Linalool oxide <cis->	0.10
25.329	Linalool	4.46
26.063	Rose oxide <cis>	2.52
27.207	Rose oxide <trans>	0.59
29.357	Menthone	1.81
30.033	Isomenthone	6.52
31.668	Menthol	0.08
32.100	Terpineol <alpha>	0.15
34.072	Nerol	0.87
34.391	Citronellol	40.81
35.052	Neral	0.25
35.922	Geraniol	9.22
36.045	Isopulegol <neoiso>	0.11
36.892	Myrtanol <trans>	0.12
37.057	Geranial	0.41
37.471	Citronellyl formate	11.69
39.117	Geranyl formate	2.30
42.514	Citronellyl acetate	0.36
44.406	Copaene <alpha>	0.44
44.955	Bourbonene <beta>	0.59
45.272	Elemene <beta>	0.09
47.285	Caryophyllene <trans>	1.31
48.053	Bergamotene <trans-alpha>	0.08
48.215	Guaiene <alpha>	0.26
48.357	Citronellyl propionate	0.62
48.621	Guanidiene <6,9>	3.46
49.124	Guanidiene isomer	0.25
49.551	Humulene <alpha>	0.27
49.826	(-)-Alloaromadendrene	0.12
50.194	Geranyl propanoate	0.80
50.534	Cadina-1(6),4-diene <10betaH->	0.08
51.128	Germacrene D	0.71
51.650	Gurjunene <gamma>	0.11
51.723	Viridiflorene	0.57
52.022	Bicyclogermacrene	0.09
52.152	Muurolene <alpha>	0.09
52.582	Neryl butyrate	0.08
52.690	Bisabolene <beta>	0.12
53.061	Cadinene <gamma>	0.07
53.344	Cadinene <delta>	0.52
53.649	Citronellyl isobutyrate	1.32
55.470	Neryl butyrate	1.25
56.203	Citronellyl valerate	0.06
57.141	Phenylethyl tiglate	0.42
59.294	Citronellyl valerate	0.08
59.583	Eudesmol <gamma>	0.10
61.614	Citronellyl tiglate <(E)->	0.65
62.737	Citronellyl butyrate	0.16
63.024	Bisabolol <alpha>	0.63
63.527	Geranyl tiglate	1.54

R.Time	Name
64.489	Geranyl hexanoate

Area%
0.08
100.00